

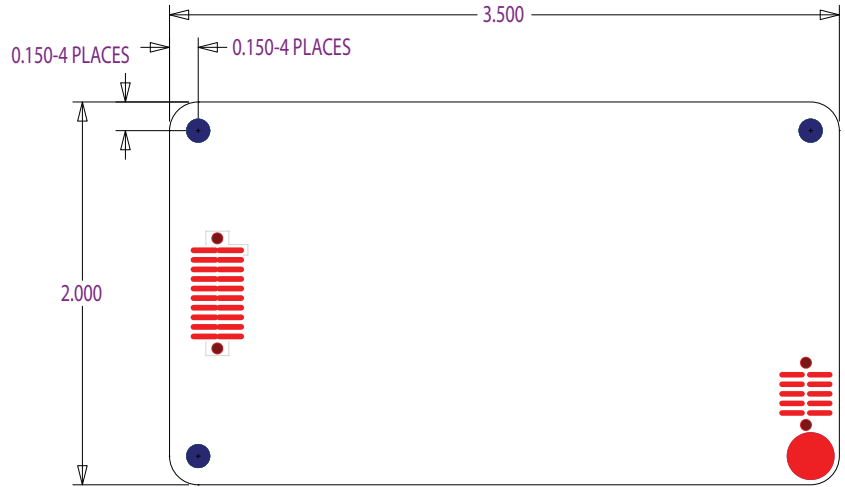
MX-1

Masimo Rainbow SET OEM Board

BOARD DIMENSIONS

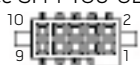

Board Dimensions	Typical
Width	2.0 inch
Length	3.5 inch
Thickness	0.062 inch
Top Height	0.2 inch
Bottom Height	0.2 inch
Mounting Hole \varnothing	0.125 inch

BOARD OUTLINE



Actual size

CONNECTOR DATA

Connector Description	Power and Communications Connector	Sensor Connector
Number of Pins	10	20
Configuration	2 rows of 5	2 rows of 10
Angle	Vertical	Vertical
Pin Grid	0.050 inch	0.050 inch
Manufacturer Part #	Samtec SFM-105-02-S-D-A 	Samtec SFML-110-T2-S-D-A 

DC POWER REQUIREMENTS

	Typical	Maximum
Input Voltage	+5V	$\pm 0.25V$
Line/Load Regulation		1% p-p
Avg. Power	500 mW	900 mW

SERIAL INTERFACE

	Default	Maximum
Bit Rate (Configurable)	9600	57600

To find out more about the MX-1 Board
call 949-297-7000 or visit www.masimo.com

©2009 Masimo Corporation. All rights reserved.

