

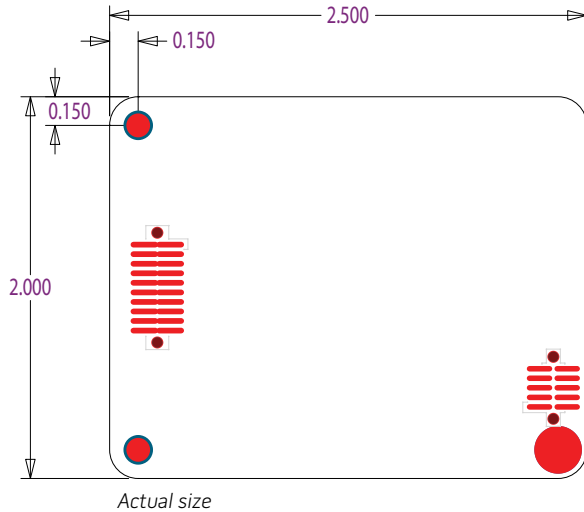
# MX-3

## Masimo Rainbow SET OEM Board



### BOARD DIMENSIONS

| Board Dimensions            | Typical    |
|-----------------------------|------------|
| Width                       | 2.0 inch   |
| Length                      | 2.5 inch   |
| Thickness                   | 0.062 inch |
| Top Height                  | 0.2 inch   |
| Bottom Height               | 0.2 inch   |
| Mounting Hole $\varnothing$ | 0.125 inch |

### BOARD OUTLINE



### CONNECTOR DATA

| Connector Description | Power and Communications Connector (J3)  | Sensor Connector (J1)   |
|-----------------------|--|---|
| Number of Pins        | 10   | 20  |
| Configuration         | 2 rows of 5  | 2 rows of 10  |
| Angle                 | Vertical   | Vertical  |
| Pin Grid              | 0.050 inch   | 0.050 inch  |
| Manufacturer Part #   | Samtec SFM-105-02-S-D-A<br> | Samtec SFML-110-T2-S-D-A<br> |

### DC POWER REQUIREMENTS

|                      | Typical | Maximum     |
|----------------------|---------|-------------|
| Input Voltage        | +5V     | $\pm 0.25V$ |
| Line/Load Regulation |         | 1% p-p*     |
| Avg. Power           | 550 mW  | 1 W*        |

\* These values are preliminary and will be finalized during Mx-3 board verification.

### SERIAL INTERFACE

|                         | Default | Maximum |
|-------------------------|---------|---------|
| Bit Rate (Configurable) | 9600    | 57600   |

To find out more about the MX-3 Board  
call 949-297-7000 or visit [www.masimo.com](http://www.masimo.com)

©2009 Masimo Corporation. All rights reserved.

