

Invest in a Sustainable Future

Masimo Sensor Recycling Program



At Masimo, we share your commitments to both excellent patient care and environmental responsibility. That's why we offer recycling solutions for all Masimo pulse oximetry sensors. By recycling sensors with Masimo instead of reprocessing through a third-party, your facility can help contribute to the goal of zero waste-to-landfill, and gain peace of mind that all sensors meet our clinical performance standards.



Reduce Waste. Reduce Cost.

We continually strive to enhance the sustainability of our business practices. From sensor design and disposal, to what goes into making them, we use materials that are less wasteful and can be refurbished or reclaimed without compromising quality.

Through the Masimo Sensor Recycling Program, thousands of pounds of used sensors are collected and processed by an e-waste facility to recover available recyclable materials—helping reduce unnecessary cost and waste.

~55K lbs.

**DIVERTED ANNUALLY
FROM LANDFILL**

~\$2.5 MM

**ANNUAL COST SAVINGS
FROM RECYCLING**

How It Works

1. Receive durable collection containers and locking lids at no additional charge.
2. Fill the collection containers with used adhesive sensors.
3. Return the filled collection containers to Masimo, or use our pick-up service, and automatically receive replacement containers.
4. Receive credit for eligible sensors returned.
5. Order new sensors with recycling credits and receive quarterly reports on cost savings and waste avoidance.



How Does Masimo Recycling Differ from Third-Party Reprocessing?

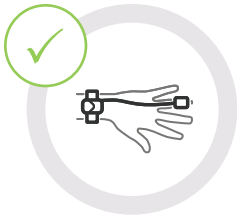
While third-party reprocessing may seem like a good option for sustainability, these reprocessed sensors can also compromise performance and quality standards.

Third-party reprocessing alters single-use sensors from their original form and function, which may have an adverse effect on patient care.

YOU DON'T HAVE TO COMPROMISE.

By participating in Masimo's recycling program, you can feel confident in sensor performance while benefitting from your sustainability efforts.

Why Recycle with Masimo?



**SENSOR
PERFORMANCE**



**WASTE
REDUCTION**



**COST
SAVINGS**

Where Do the Sensors Go?

Your participation helps divert sensor materials away from landfills. As a result, sensor components are consumed as part of reprocessing or recovered for use in everyday products.

To achieve **ZERO** waste-to-landfill:

1

Masimo partners with a recycling facility to process sensors through an industrial-grade shredder.



2

Copper wire and plastic insulation are shipped to a large metal smelter.



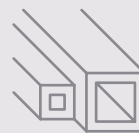
3

Materials go into the smelter at a high temperature, where combustible components like plastic serve as fuel to maintain the heat.



4

Copper and other metals are liquified and separated into elemental components. Leftover slag material is reintroduced back into smelting process.



5

Recovered material is used in everyday recycled products.



Getting Started

Discuss the program with your Masimo Representative:

Schedule dates for in-servicing to help you get your recycling program started.

Select locations for Masimo sensor collection containers with Masimo experts.

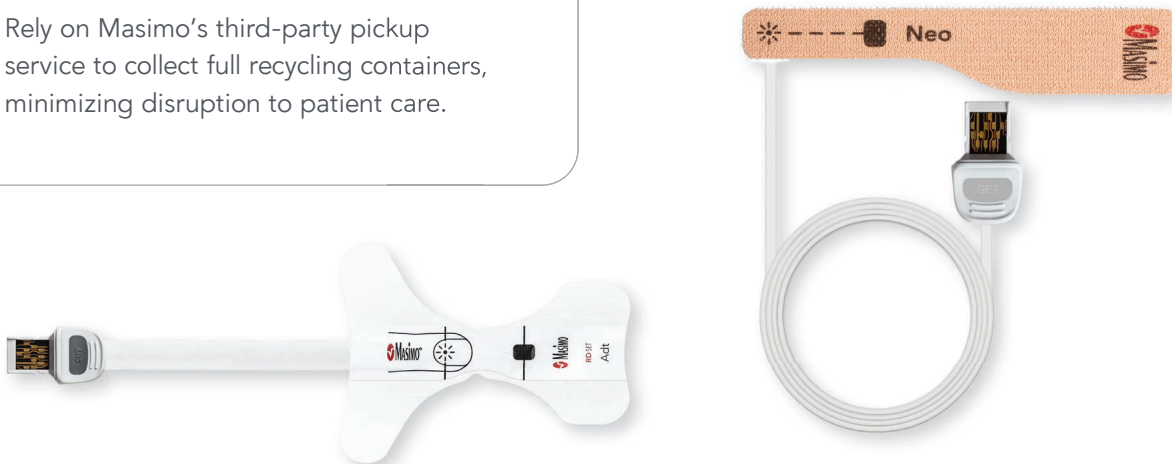
Determine the number of collection containers needed and eligible sensors.

Rely on Masimo's third-party pickup service to collect full recycling containers, minimizing disruption to patient care.

Implement these simple steps:

Sign or amend your contract to include the recycling program.

Place Masimo-provided sensor collection containers in predetermined locations.



START RECYCLING TODAY!

Participate in the Masimo Sensor Recycling Program and benefit from dependable sensor performance, waste reduction, and cost savings—without the risks associated with third-party reprocessed sensors.

Contact your local Masimo Representative or call
Customer Service at **1-800-326-4890** to get started.

Caution: Federal (USA) law restricts this device to sale by or on the order of a physician. See instructions for use for full prescribing information, including indications, contraindications, warnings, and precautions.

Masimo U.S.
tel 1-877-4-Masimo
info-america@masimo.com

Masimo International
tel +41-32-720-1111
info-international@masimo.com

